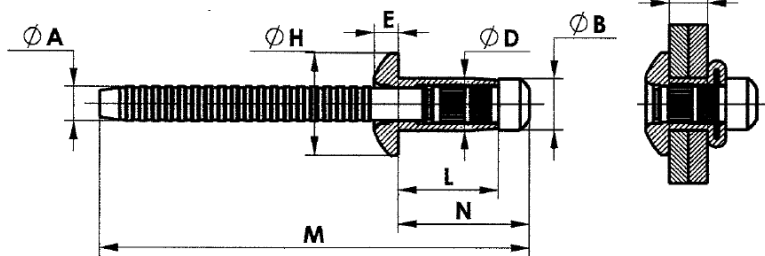


ORLOCK ALUMINIUM



Technical Data



SIZE	RIVET CODE	RIVET LENGTH L ± 0.012	GRIP RANGE G	A DIA. ± 0.003	B DIA. ± 0.002	D DIA. ± 0.002	E ± 0.008	H DIA. ± 0.012	M ± 0.08	N ± 0.020
3/16" (0.189")	LH48090P	0.354	0.059-0.138	0.119	0.191	0.187	0.087	0.386	1.850	0.480
	LH48115P	0.453	0.138-0.236						1.929	0.579
	LH48140P	0.551	0.236-0.335						2.008	0.677
	* LH48165P	0.650	0.335-0.433						2.126	0.776
	* LH48190P	0.748	0.433-0.531						2.205	0.874

RIVET CODE	SHEAR STRENGTH, Lb		TENSILE STRENGTH, Lb	
	min	nom.	min	nom.
LH48090P	331	397	265	375
LH48115P/ LH48190P	485	573		

BODY MATERIAL	ALUMINIUM ALLOY-ALMG2.5(5052)
MANDREL MATERIAL	ALUMINIUM ALLOY 7075 OR EQUIVALENT
FINISH	BRIGHT FINISHED SURFACE
RECOMMENDED HOLE SIZE	0.193-0.201 inch



BLIND RIVETS
Fastening Solutions

ORNIT BLIND RIVETS

Tel: +972 8 6610222, Fax: +972 8 6611380

www.ornit.com